



Client Access Inspection Report

| | |
|-----------------------|--------------------------------------------------------------------------------------------------------------------------------------------------------------------------|
| Order number | Container Loading Supervision |
| Service Type: | Loading Supervision (L/S) |
| Supplier Code | XXXXXXXXXX |
| Project Number | P1075 - inspection and container loading |
| Inspection Date | 2019-05-13 To 2019-05-13 |
| Item Numbers | Jewellery Cabinet Jewellery Cabinet / Set 2 Coffee Set 2 Coffee / |
| Reference Sample | <input checked="" type="checkbox"/> Not available <input type="checkbox"/> From client <input type="checkbox"/> From supplier <input type="checkbox"/> From manufacturer |
| Available Information | <input type="checkbox"/> Pictures <input type="checkbox"/> P/O <input type="checkbox"/> PI <input type="checkbox"/> Specification |

| | | |
|----------------------------------------------------------------------------------------------------------------|--------------------------------------------------------------------------------------------------------------------------------|---------------------------------------------------------------------------------------------------------------------------------------------------------------------------------|
| Persons in charge | | |
|  Inspector Jacky |  Customer Manager Benjamin Rojo | <p>Asiaction Limited www.asiaction.com</p> <p>Unit 1613, South Tower Guangzhou World Trade Center 371-375 Huanshi Road East 510095 Guangzhou Guangdong CHINA</p> |

Click on thumbnails to open fullscreen photos and videos in your browser

[Click here to access Online Project Monitoring](#)

INSPECTION SUMMARY

| |
|-------------------------------------------------------------------------------------------------------------------------------------------------------------------------------------------------------------------------------------------------------------------------------------------------------------------------------|
| GENERAL COMMENT |
| <p>Seal no: 190514753</p> <p>Container no: HDMU 2699347</p> <p>The items loaded in the container:</p> <p>26197: 220</p> <p>26199: 220</p> <p>26197: total 11 pallets (20 cases per pallet)</p> <p>26199: total 5 pallets (1 pallet for 28 cases, 4 pallets for 48 cases)</p> |

| | | | | |
|-----------------------------|---------|-------------|--------------------------------|---------|
| Overall Status | Conform | | | |
| | Conform | Not conform | Subject to client's evaluation | Comment |
| I. Quantities | X | | | |
| II. Container | X | | | |
| III. Product Specifications | X | | | |

| | | |
|----------------------------------------|-----------------------------------------------------------------------------|--|
| Ref | Details | |
| Jewellery Cabinet Jewellery Cabinet | Color: White Material: - Dimensions: 34*37*144cm | |
| | Color: White | |

Set 2 Coffee Set 2 Coffee

Material: -
Dimensions: 48*48*45cm
40*40*40cm

INSPECTION DETAILS

| | |
|---------------|---------|
| I. Quantities | Conform |
|---------------|---------|

| Ref | Qty Expected | Qty of Products | | Qty of Cartons | |
|-------------------|--------------|-----------------|------------|----------------|------------|
| | | Loaded | Not Loaded | Loaded | Not Loaded |
| Jewellery Cabinet | 220 | 220 | 0 | 220 | 0 |
| Set 2 Coffee | 220 | 220 | 0 | 220 | 0 |

| | |
|-------------------------|---------|
| II. Container situation | Conform |
|-------------------------|---------|

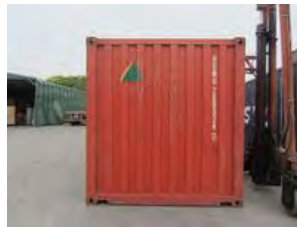
| Container No. | Size | Lock Number | Remarks |
|---------------|--------|-------------|--------------------------------------------------------------------------------------|
| HDMU 2699347 | 1*20GP | 190514753 | As you can see in the photo "img_0721", there is still empty space in the container. |



img_0670-Warehouse



img_0671-Cargo in warehouse



img_0672--Empty container-outside



img_0673-Empty container-outside



img_0674-Empty container-outside



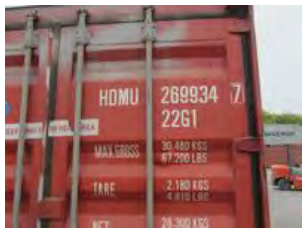
img_0675-Empty container-outside



img_0676-Empty container-outside



img_0678-Empty container-outside



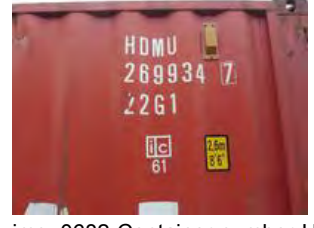
img_0679-Empty container-outside



img_0680-Empty container-outside



img_0681-Empty container-outside



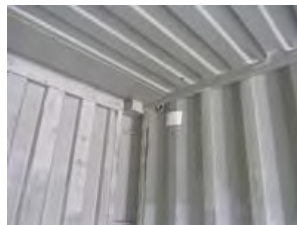
img_0682-Container number-HDMU 2699347



img_0684-Empty container-inside



img_0685-Empty container-inside



img_0687-Empty container-inside



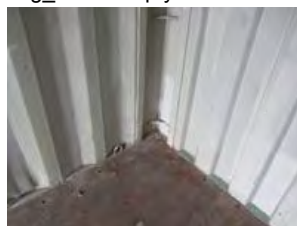
img_0688-Empty container-inside



img_0689-Empty container-inside



img_0690-Empty container-inside



img_0691-Empty container-inside



img_0692-Empty container-inside



img_0695-Loading



img_0696-Loading



img_0697-Loading



img_0698-Loading



img_0699-Loading



img_0700-Loading



img_0701-Loading



img_0702-Loading



img_0703-Loading



img_0704-Loading



img_0705-Loading



img_0706-Loading



img_0707-Loading



img_0708-Loading



img_0709-Loading



img_0710-Loading



img_0711-26197-Loading



img_0712-Loading



img_0713-Loading



img_0714-Loading



img_0715-Loading



img_0716-Loading



img_0717-Loading



img_0718-Loading



img_0719-Loading



img_0720-Loading



img_0721-Finish loading



img_0722-Finish loading



img_0723-Close the container



img_0724-Close the container



img_0725- seal no 190514753



img_0727-Close the container



img_0728-Close the container

III. Product Specifications

Conform

Jewellery Cabinet Jewellery Cabinet



img_0650



img_0651



img_0652



img_0653



img_0654



img_0655



img_0656



img_0657



img_0658



img_0659

Set 2 Coffee Set 2 Coffee



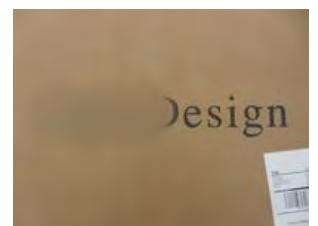
img_0661



img_0662



img_0663



img_0664



img_0665



img_0666



img_0667



img_0668



img_0669



img_0705



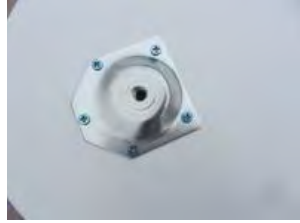
img_0706



img_0707



img_0708



img_0709

-- END OF REPORT --

Asiaction Limited

2003, 20/F, Tower 5, China Hong Kong City,
33 Canton Road, Tsim Sha Tsui, Kowloon
Hong Kong
Tel : +852 - 81207719

Asiaction - Purchasing Office

Unit 1613, South Tower, Guangzhou World Trade Center
371-375 Huanshi Road East
510095 Guangzhou CHINA
广州市越秀区环市东路371-375号世界贸易中心大厦南塔1613室
Tel : +86-20-87626279 / 87675370